

KEY FACTS



SIZES

Length: Up to 6m from head to tip of tail.

Weight: Up to 1000kg.



BREEDING

Sexual maturity: 7–15 years.

Breeding season: Coincides with dry season.

No. of eggs: 25 to 95.



LIFESTYLE

Habit: Solitary or in small groups in and around water.

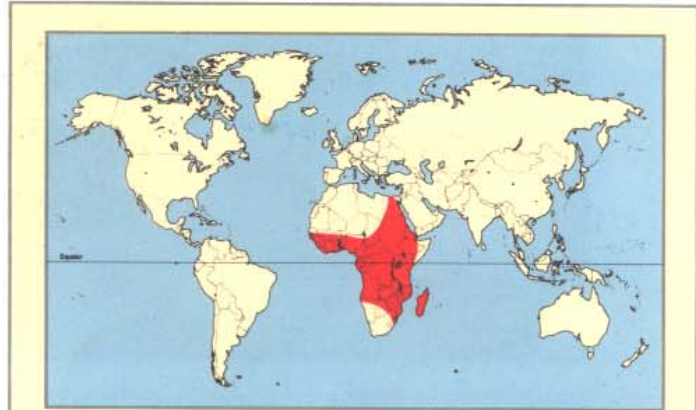
Diet: Mammals, reptiles (including other crocodiles), birds, fish and carrion.

Lifespan: Estimated 70–100 years.



RELATED SPECIES

There are 23 crocodylian species (crocodiles, alligators, the caiman and the gharial) found throughout the tropical and subtropical areas of Asia, Australia and the Americas.



Range of the Nile crocodile

DISTRIBUTION

The Nile crocodile population has been severely depleted throughout much of its range due to overhunting for skins and meat, but it is not yet in danger of extinction.

CONSERVATION

The Nile crocodile population has been severely depleted throughout much of its range due to overhunting for skins and meat, but it is not yet in danger of extinction.

© MXM IMP BV/IMP LTD WILDLIFE FACT FILE

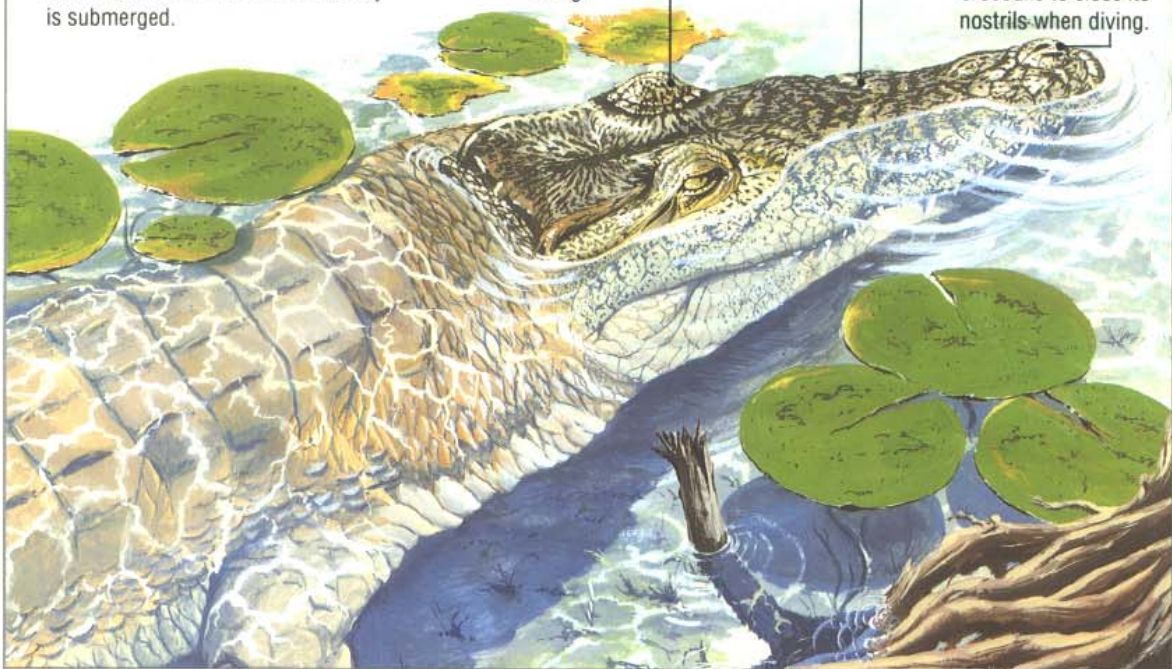
FEATURES OF THE NILE CROCODILE

Senses: The Nile crocodile's ears, eyes and nostrils lie along the top of its head so that it can hear, see, smell and breathe when the rest of its body is submerged.

Eyes: Have a 'third eyelid' which gives protection when diving.

Snout: Armed with sharp, cone-shaped teeth.

Nostrils: Have special muscles, which enable the crocodile to close its nostrils when diving.





PROFILE NILE CROCODILE

With its massive jaws, the Nile crocodile poses a deadly threat to its fellow creatures as it lurks beneath the water, waiting to snap them up.

FEET

The crocodile uses its powerful feet and claws to clamber up the riverbank with surprising speed. The female also uses her claws to dig a nest hole for her eggs.

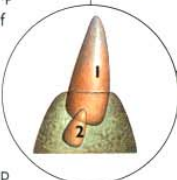
NOSTRILS

The nostrils sit on a raised part of the snout, enabling the crocodile to breathe when the rest of its body is submerged. A flap seals the nostrils to keep out water during dives.



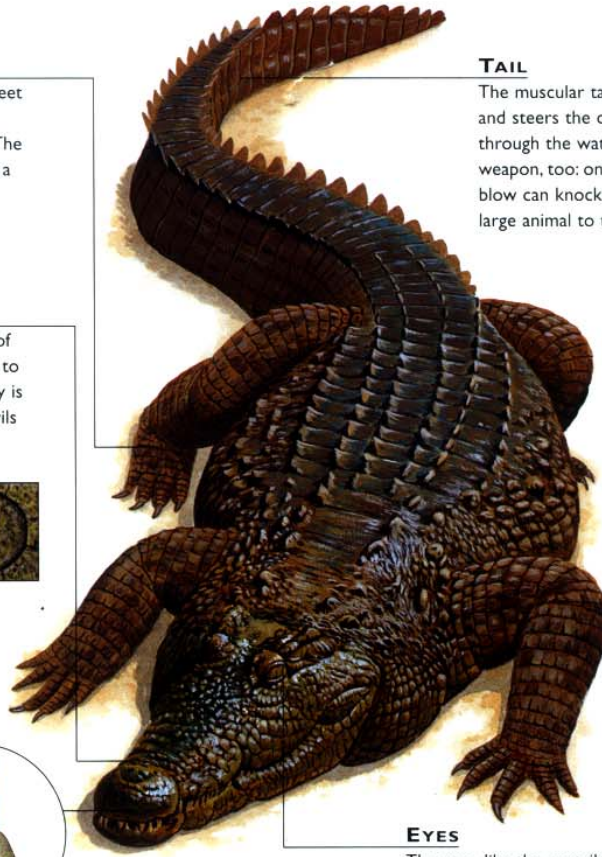
TEETH

The simple teeth rip huge chunks out of prey. They grow continuously, and after about two years the worn teeth (1) are forced out by sharp new ones (2) beneath them.



TAIL

The muscular tail propels and steers the crocodile through the water. It is a weapon, too: one whip-like blow can knock even a large animal to the ground.



EYES

The eyes, like the nostrils, project above the head, so that the crocodile can keep a lookout for prey while almost fully submerged in the water.

VITAL STATISTICS

WEIGHT	Up to 990kg
LENGTH	Up to 6m
SEXUAL MATURITY	7-15 years
MATING SEASON	Varies with latitude, but coincides with dry season
GESTATION PERIOD	95-100 days
NUMBER OF YOUNG	25 to 100
BIRTH INTERVAL	Probably annual
TYPICAL DIET	Mammals, such as zebra, cattle and wildebeeste, other reptiles (including other crocodiles), fish, birds, carrion; young Nile crocodiles eat frogs and insects
LIFESPAN	70-100 years

RELATED SPECIES



● The Nile crocodile is one of 13 species in the family *Crocodylidae*, the true crocodiles. Included in this family is the mugger crocodile (above). Near relatives include alligators and caimans. These reptiles are found throughout the tropical and subtropical areas of Asia, Australia and the Americas.



CREATURE COMPARISONS

The American alligator is a very close relative of the Nile crocodile. It grows to roughly the same length, but its snout is broader and blunter than that of the crocodile, and it can also be distinguished by its teeth.

American alligator



The alligator's lower teeth slot into sockets in the upper jaw, located between the teeth, so they are hidden when the mouth is closed. The crocodile's lower fourth tooth can, however, always be seen.

Nile crocodile

